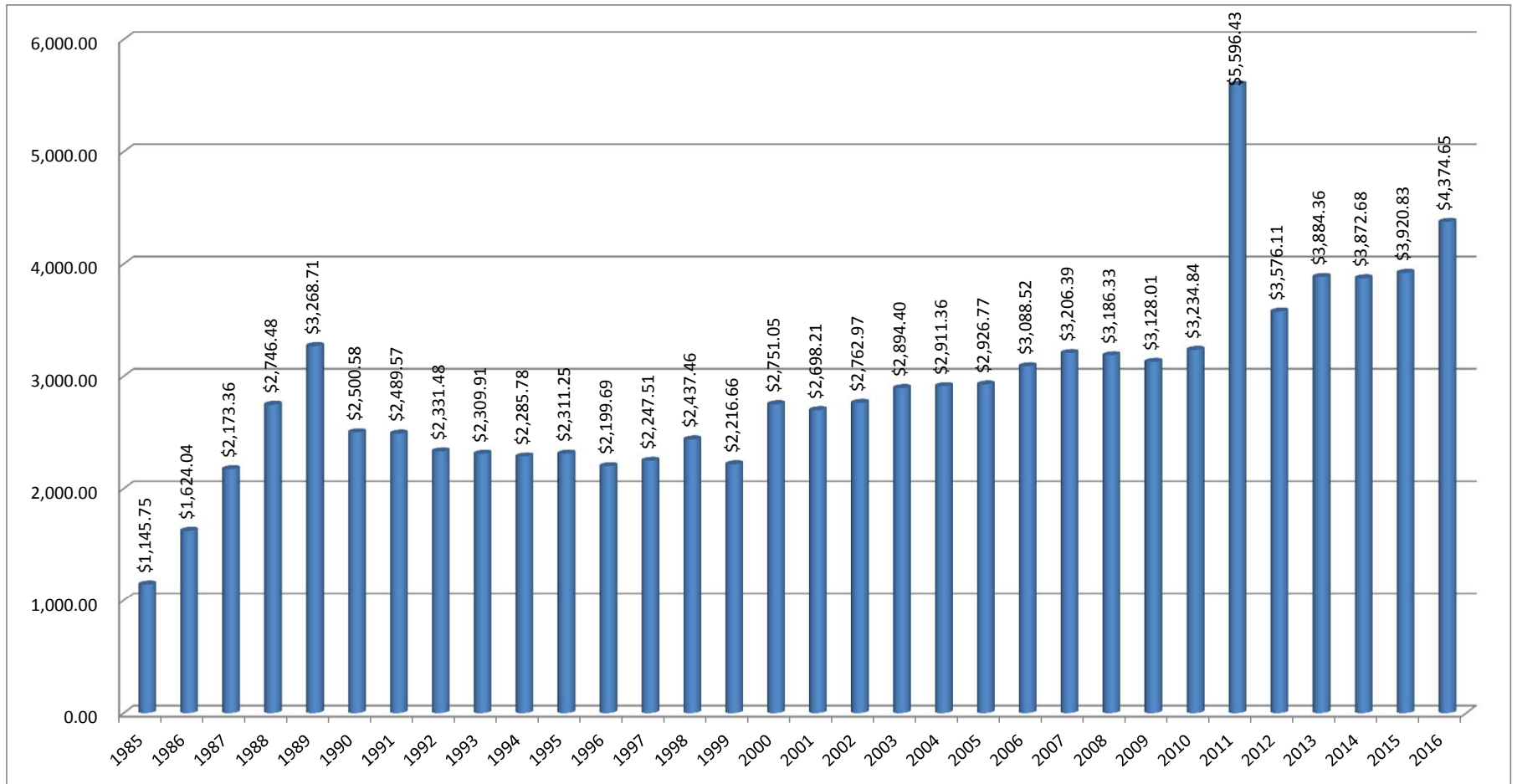


State Aid Unit Value History



Year	Unit Value	% Change	Year	Unit Value	% Change	Year	Unit Value	% Change	Year	Unit Value	% Change
1985	1,145.75		1993	2,309.91	-0.9%	2001	2,698.21	-1.9%	2009	3,128.01	-1.8%
1986	1,624.04	41.7%	1994	2,285.78	-1.0%	2002	2,762.97	2.4%	2010	3,234.84	3.4%
1987	2,173.36	33.8%	1995	2,311.25	1.1%	2003	2,894.40	4.8%	2011	5,596.43	73.0%
1988	2,746.48	26.4%	1996	2,199.69	-4.8%	2004	2,911.36	0.6%	2012	3,576.11	-36.1%
1989	3,268.71	19.0%	1997	2,247.51	2.2%	2005	2,926.77	0.5%	2013	3,884.36	8.6%
1990	2,500.58	-23.5%	1998	2,437.46	8.5%	2006	3,088.52	5.5%	2014	3,872.68	-0.3%
1991	2,489.57	-0.4%	1999	2,216.66	-9.1%	2007	3,206.39	3.8%	2015	3,920.83	1.2%
1992	2,331.48	-6.4%	2000	2,751.05	24.1%	2008	3,186.33	-0.6%	2016	4,374.65	11.6%